
IPIMS

Content Releases

e-Learning and Knowledge Solutions

v7.2024

IHRDC

Content Releases

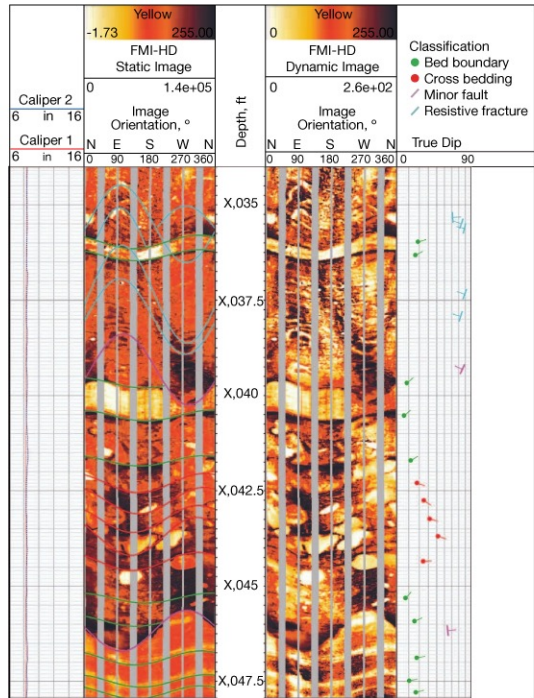
July 2024

Specialized Well Log Interpretation

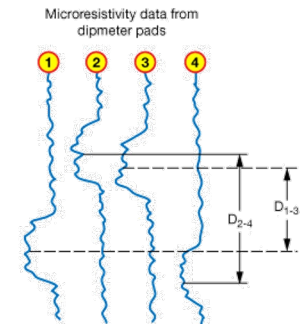
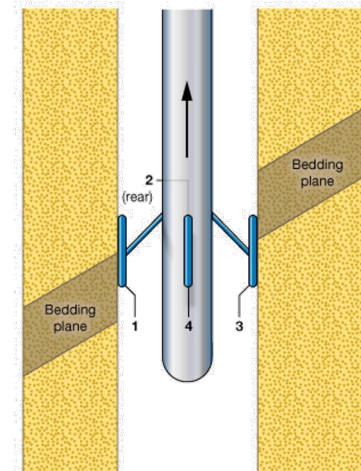
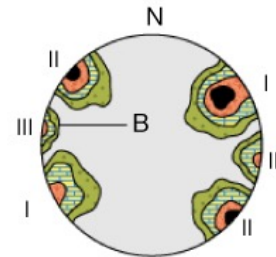
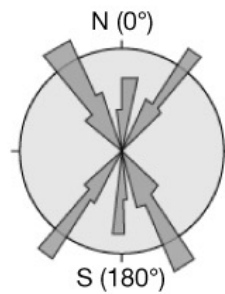
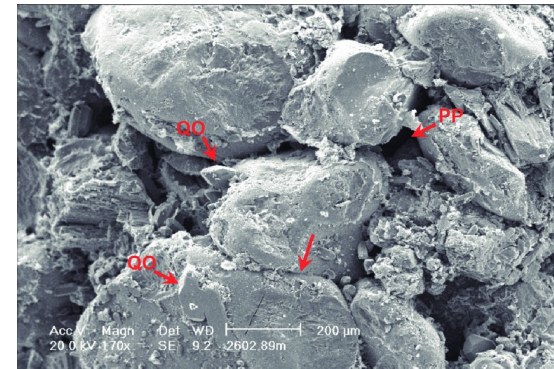
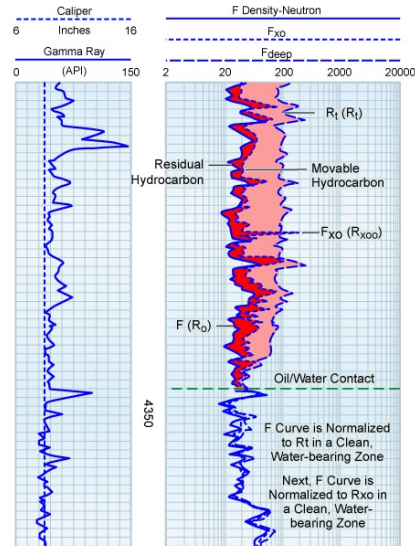
Oil and Gas Pipelines

Specialized Well Log Interpretation

- Interpretation Processes and Workflows
- Shale Interpretation Models
- Interpretation Techniques
- Natural Fracture Characterization



Courtesy of SLB

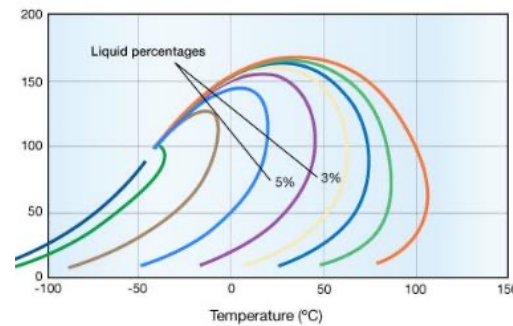
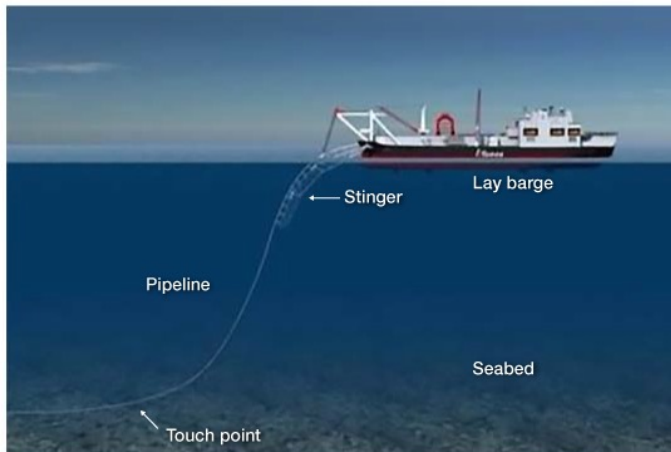


Oil and Gas Pipelines

- Overview of Oil and Gas Pipelines
- Hydraulics
- Mechanical Design
- Pipeline Construction
- Pump and Compressor Stations
- Operations and Maintenance



Luca Galuzzi - www.galuzzi.it



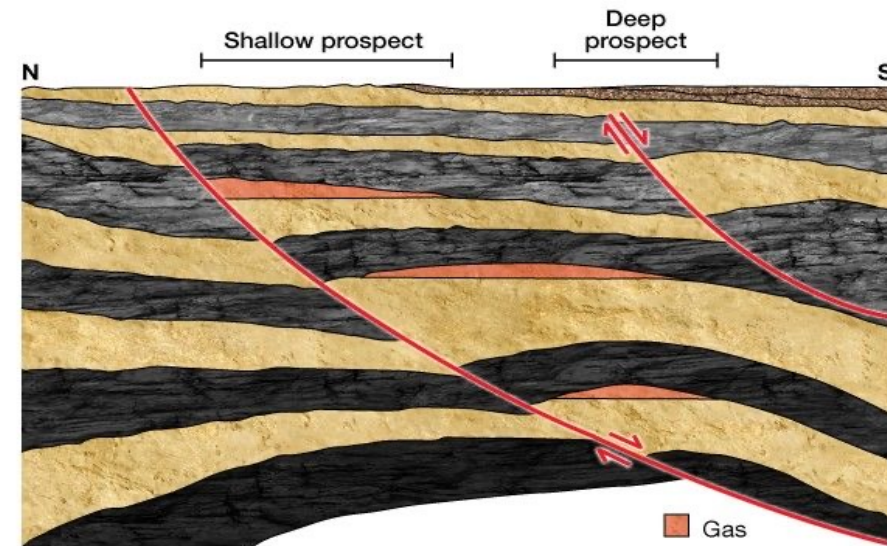
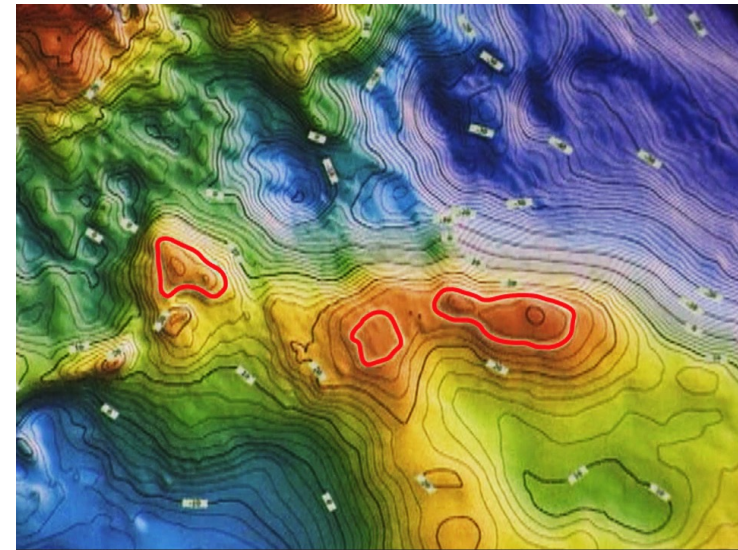
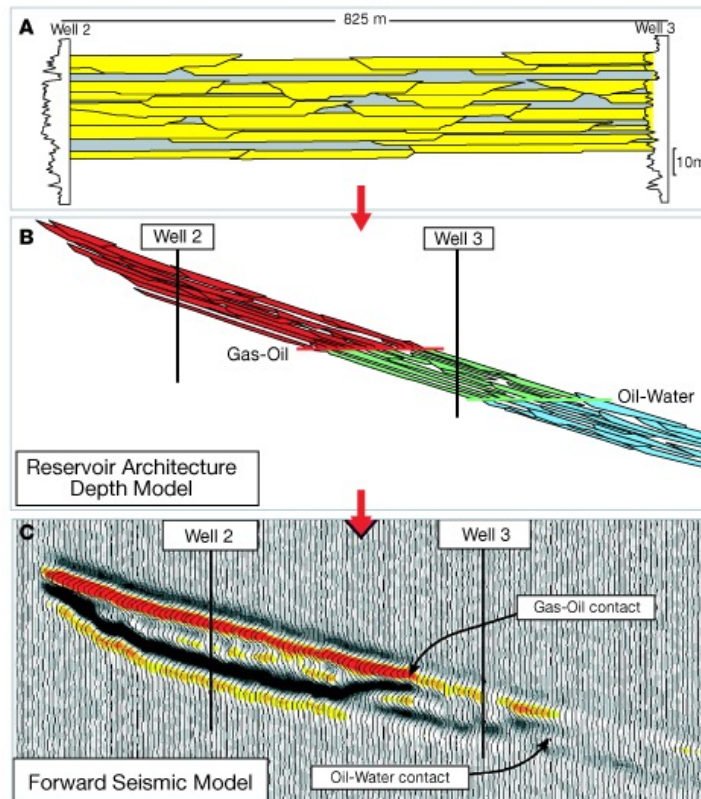
Content Release

December 2023

Prospect Generation

Prospect Generation

- Introduction to Prospect Generation
- Prospect Modeling and Risk Evaluation



Content Release

August 2023

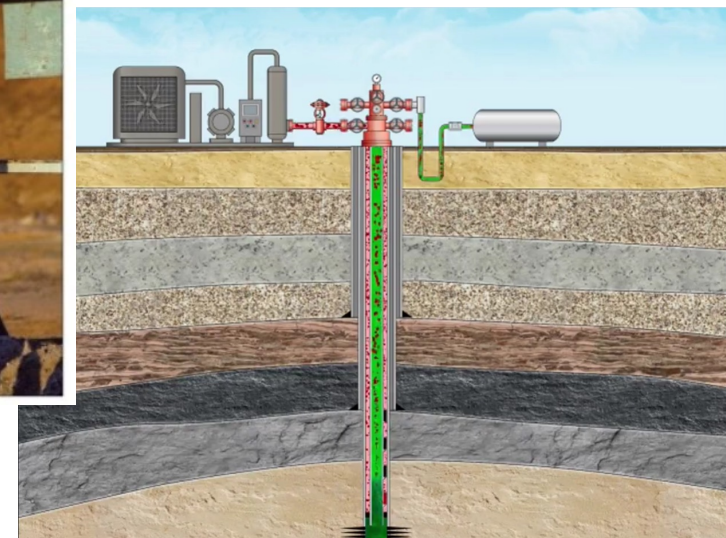
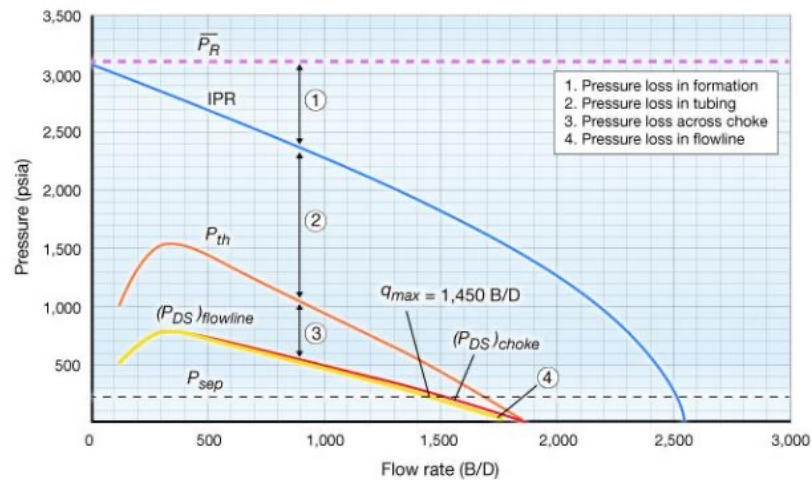
Production Technology Fundamentals

Production Technology Fundamentals

- Well Completions
- Upstream Production Facilities
- Production System Performance
- Artificial Lift



Courtesy MK



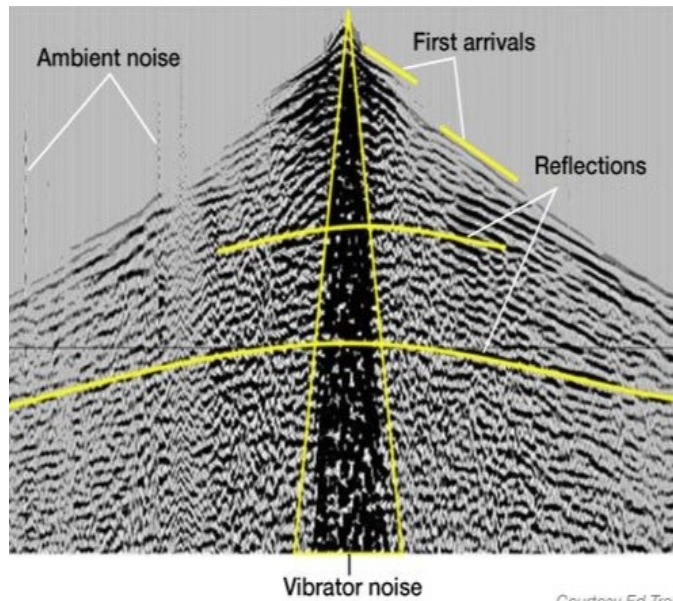
Content Release

April 2023

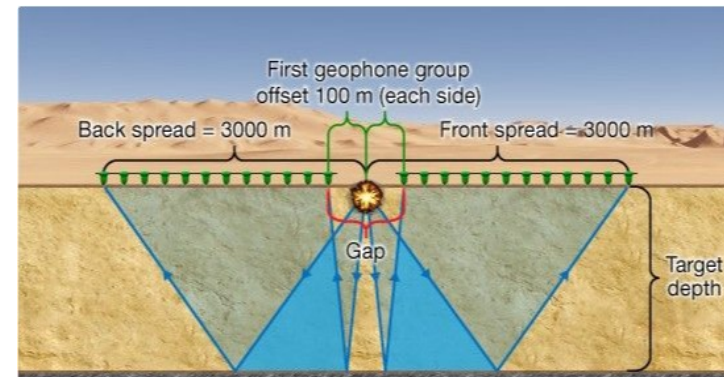
Introduction to Seismic Acquisition Planning

Introduction to Seismic Acquisition Planning

- Introduction to Seismic Acquisition Planning
- Improving the Signal-to-Noise Ratio
- Multiple Coverage in Action
- Field Crew Administration



Courtesy Ed Tree



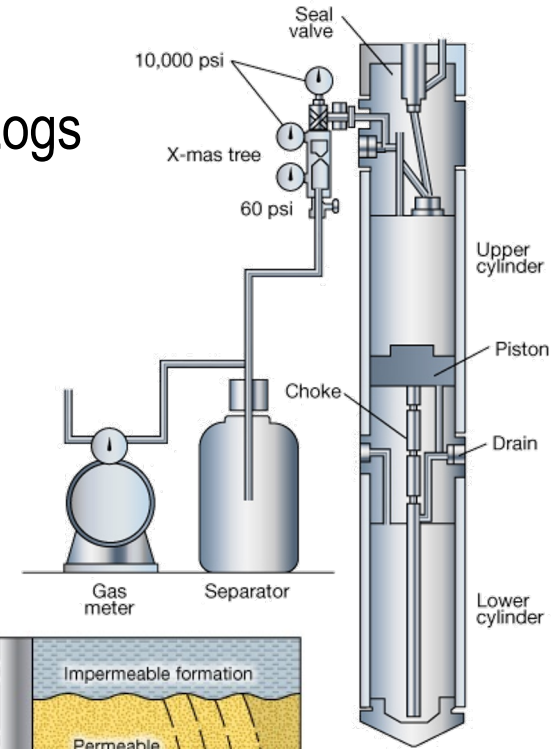
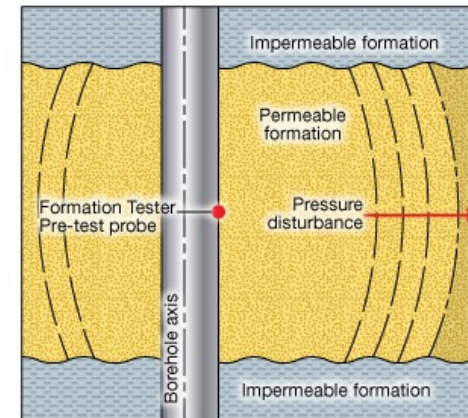
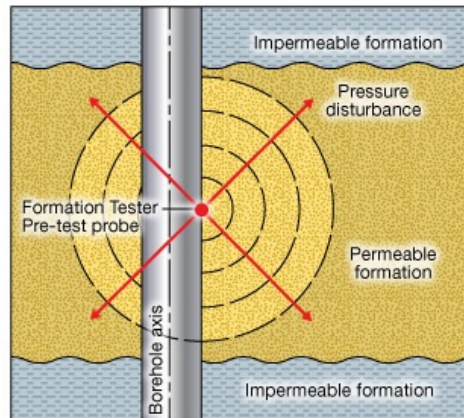
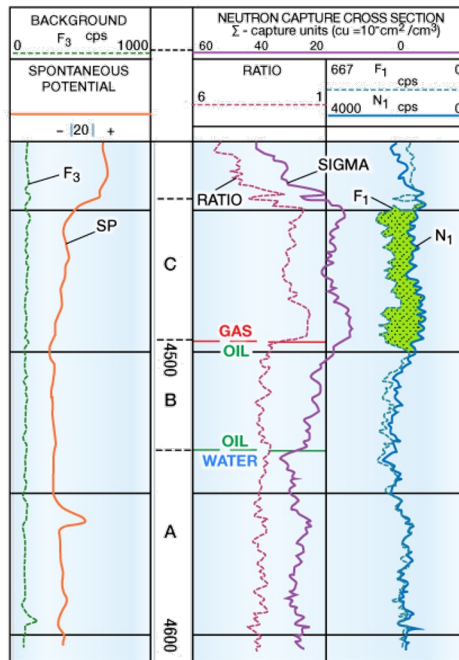
Content Release

September 2022

Specialized Open and Cased Hole Logging Tools and Well Logs

Specialized Open and Cased Hole Logging Tools and Well Logs

- Testing and Sampling Logging Tools and Well Logs
- Nuclear Magnetic Resonance Logging Tools and Well Logs
- Dielectric Logging Tools and Well Logs
- Specialized Open Hole Logging Tools and Well Logs
- Pulsed Neutron Logging Tools and Well Logs



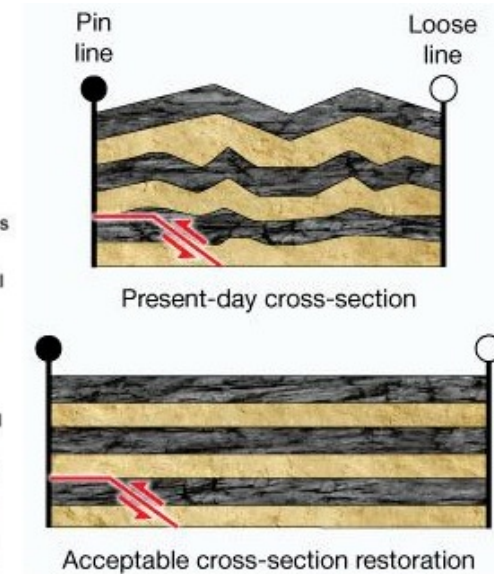
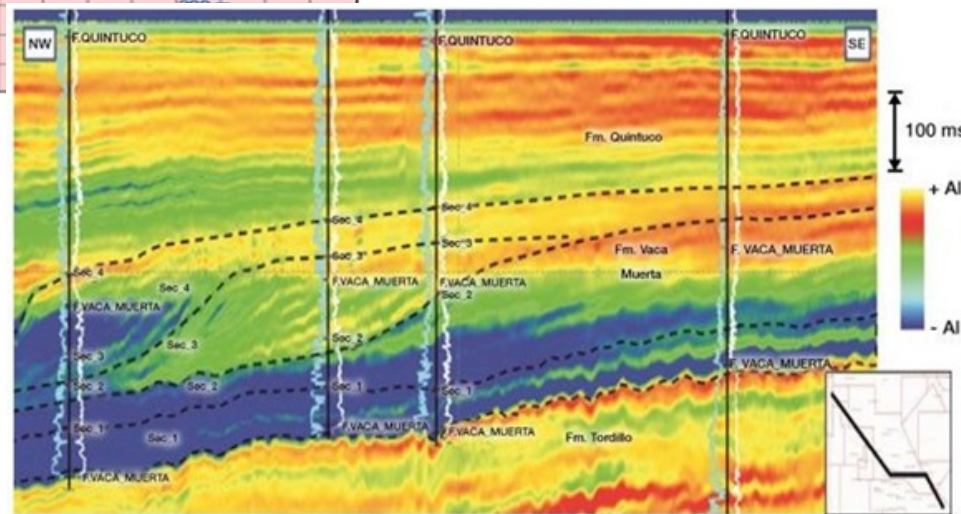
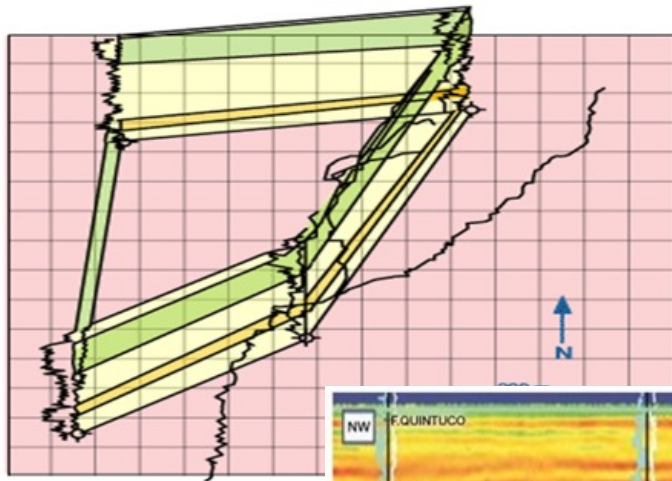
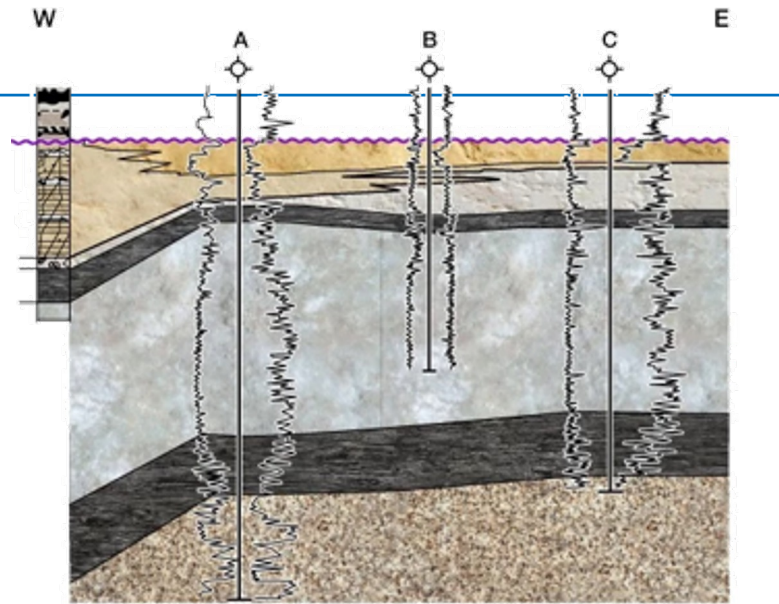
Content Release

August 2022

Geologic Cross-Sections

Geologic Cross-Sections

- Cross-Section Elements
- Cross-Sections in Two and Three Dimensions
- Structural Restoration: Concepts and Timing



Guerberoff et al. (2015); courtesy SEG

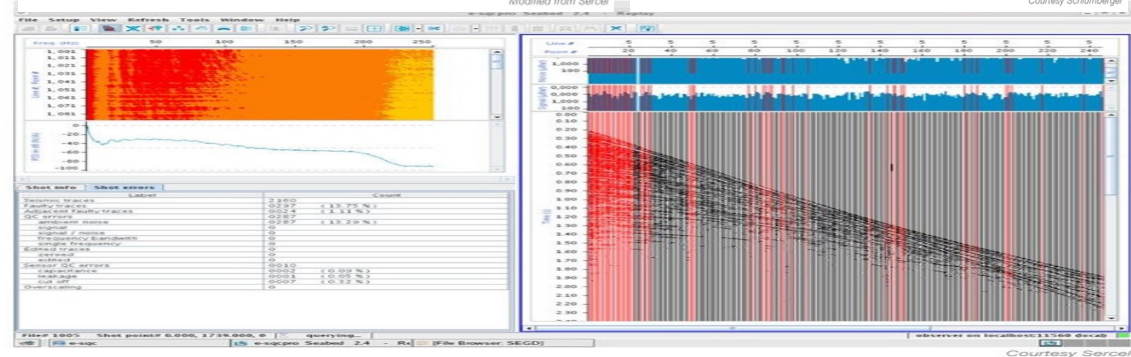
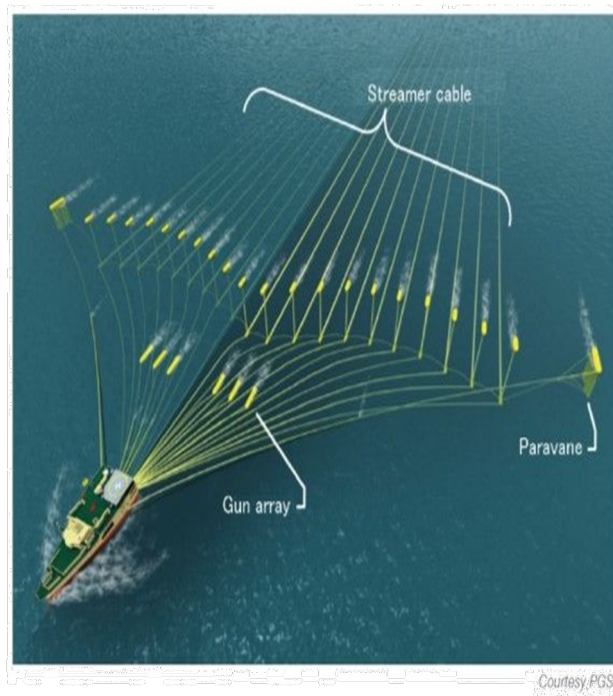
Content Release

April 2022

Introduction to Seismic Acquisition Techniques

Introduction to Seismic Acquisition Techniques

- Seismic Recording Equipment
- Land Seismic Acquisition
- Marine Seismic Acquisition
- Transition Zone Seismic Acquisition
- Seismic Pre-Processing



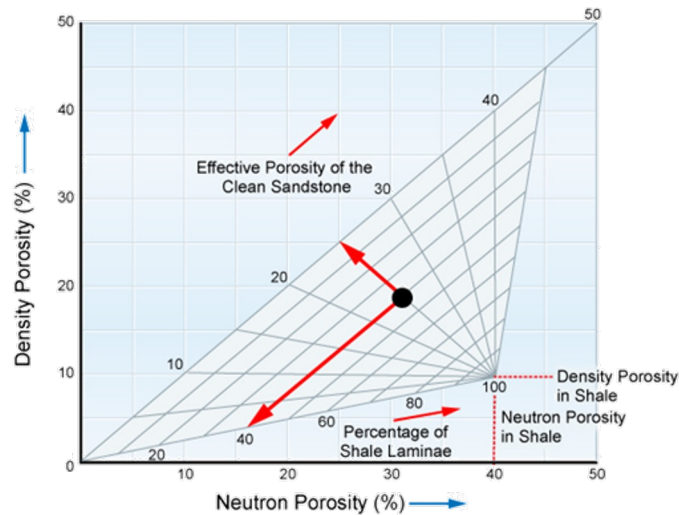
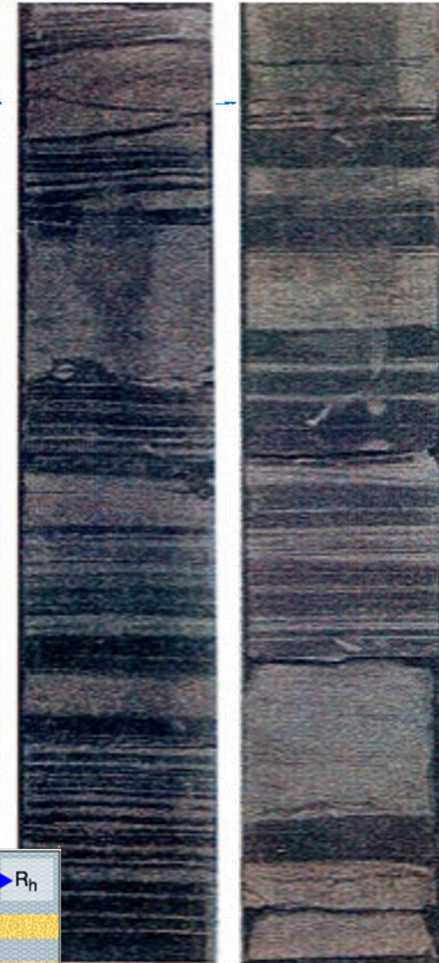
Content Releases

2021

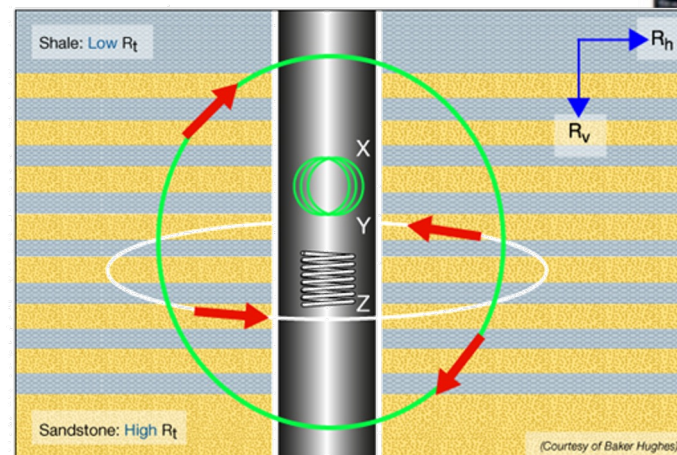
- Low Resistivity and Low Contrast Pay Interpretation
- Subsurface Mapping
- Drilling and Well Completion Fundamentals
- 3D and 4D Seismic Processing, Interpretation and Visualization

Low Resistivity and Low Contrast Pay Interpretation

- Historical and Geological Perspective of Low Resistivity and Low Contrast Pay
- Clays, Shales and Non-Clay Contributors to Low Resistivity
- Cation Exchange Capacity and Irreducible Water Saturation
- Formation Anisotropy
- Logging Tools
- Log Analysis of Low Resistivity and Low Contrast Pays

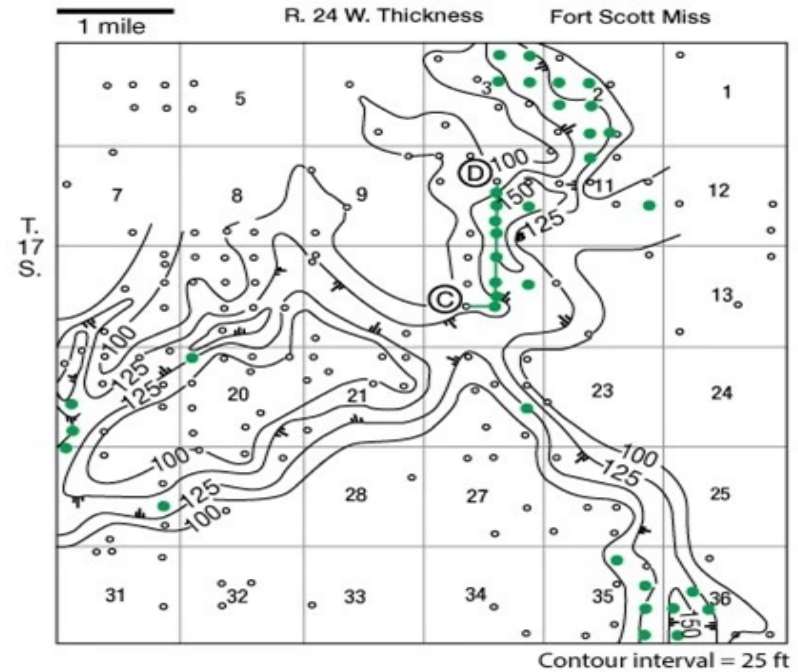
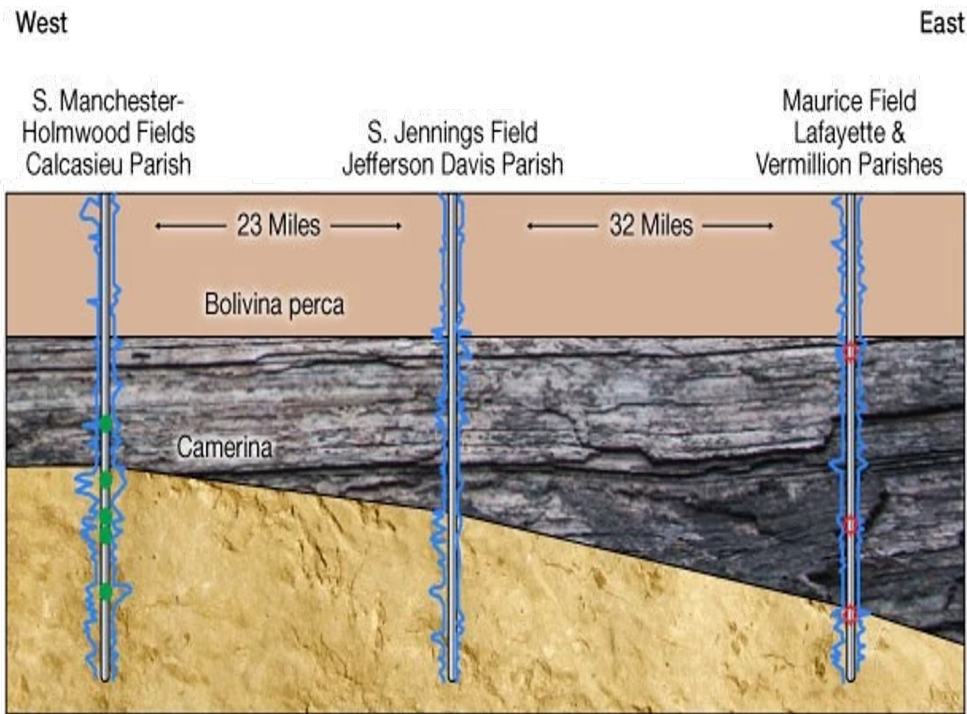


From Bateman, 1985b. © Prentice-Hall, Inc.

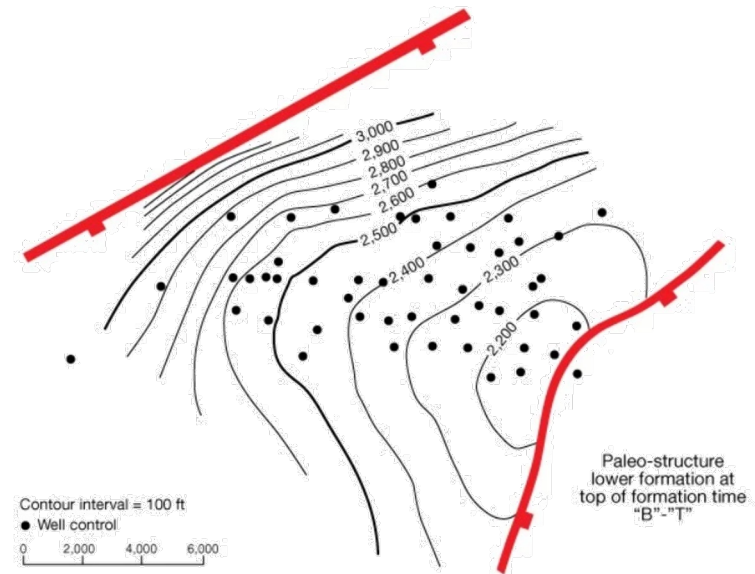


Subsurface Mapping

- Lateral Correlation of Logged Data
- Structural Contour Maps
- Isopach and Other Subsurface Maps
- Paleo-Structure Maps

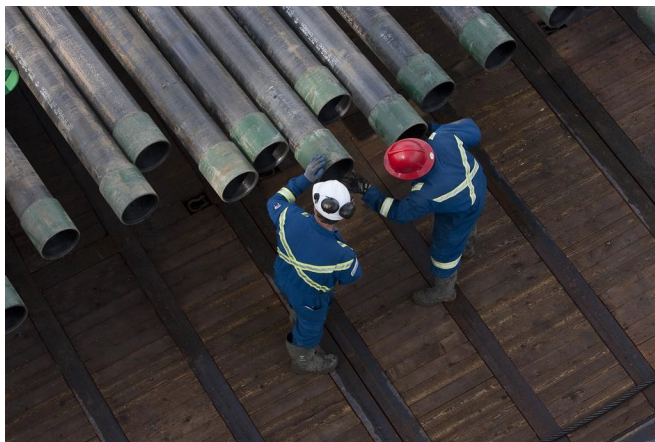


After Walters et al. (1979); courtesy Tulsa Geological Society



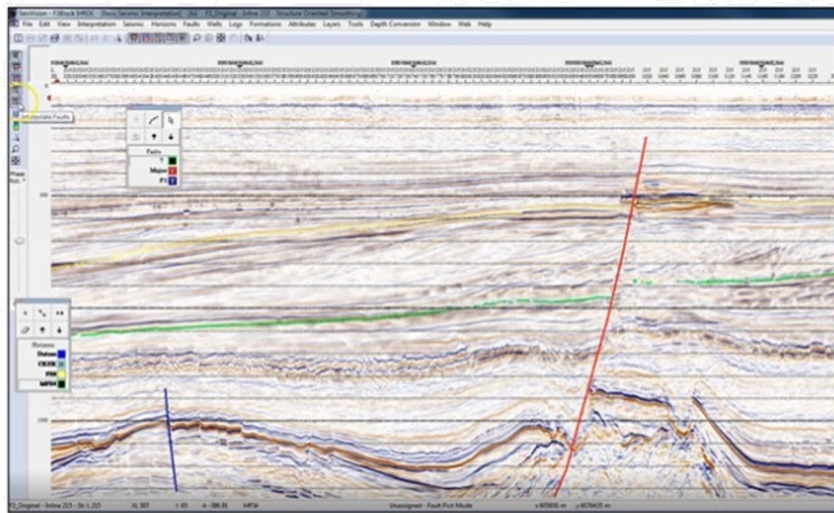
Drilling and Well Completion for Non-Engineers

- Introduction to Drilling and Well Completion
- Drilling Rig Overview
- Drill String and Drill Bits
- Drilling Fluids
- Well Planning and Design
- Drilling Program and Well Operation
- Well Completion

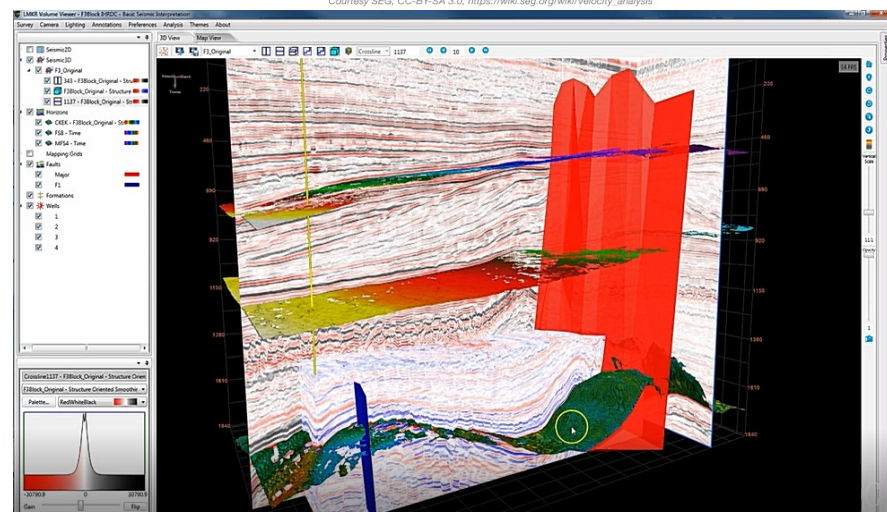
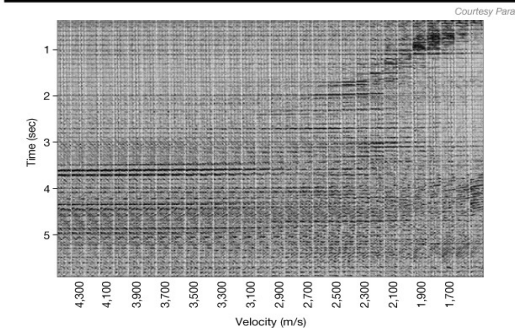
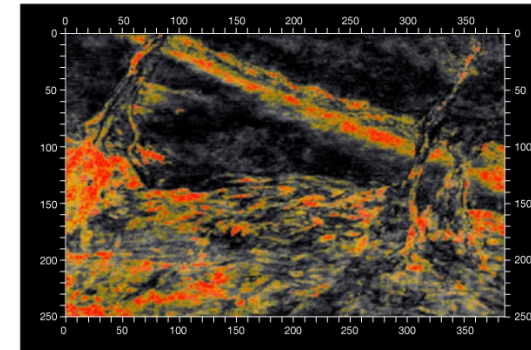


3D and 4D Seismic Processing, Interpretation and Visualization

- 3D Seismic Data Processing
- Introduction to 3D Seismic Interpretation
- Practical Application of 3D Seismic Interpretation
- Overview of 3D Volume Visualization



Courtesy of LMKR GeoGraphix.



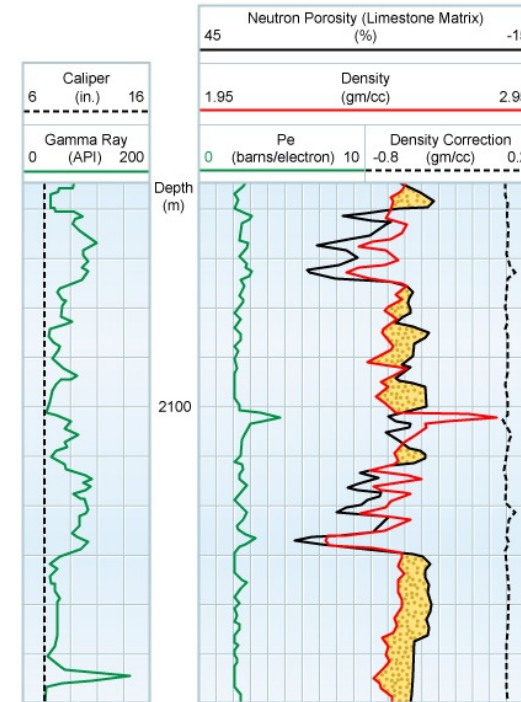
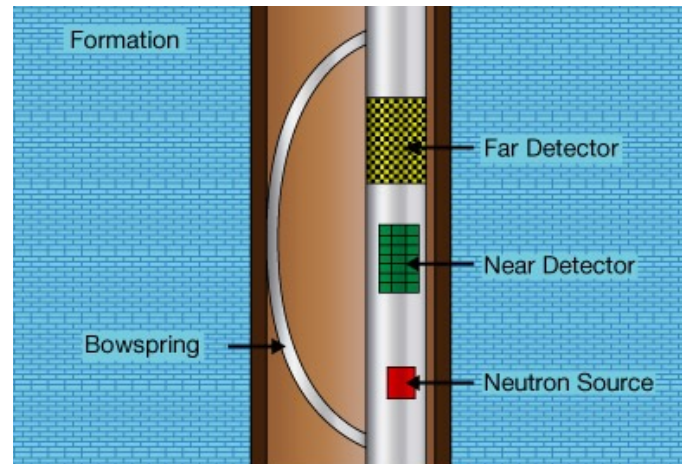
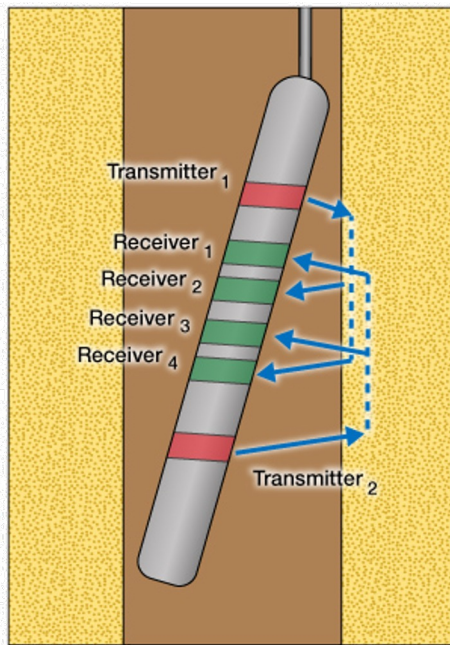
Content Releases

2020

- Logging Tools and Well Logs
- 3D and 4D Seismic Modeling, Design and Acquisition
- Perforating
- Hydrocarbon Traps
- Basic Seismic Processing

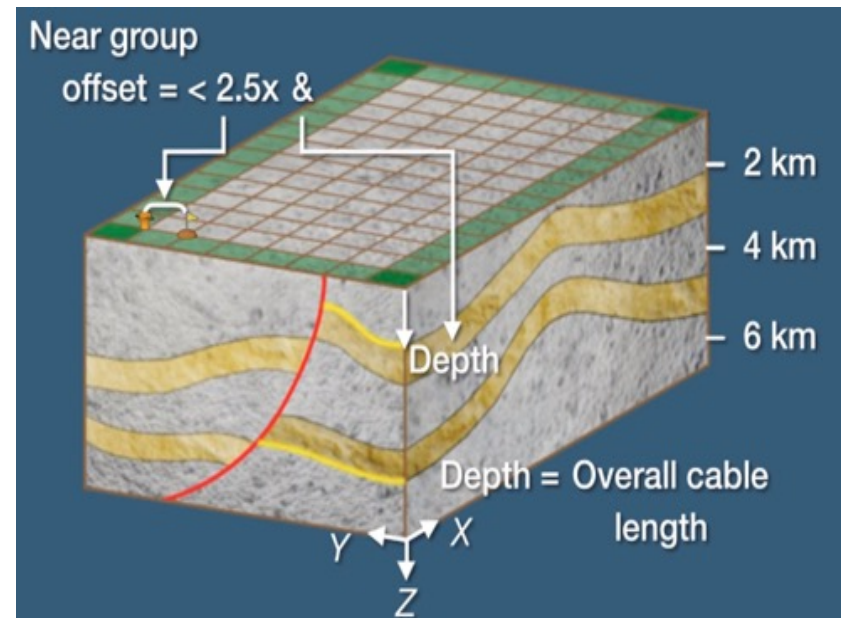
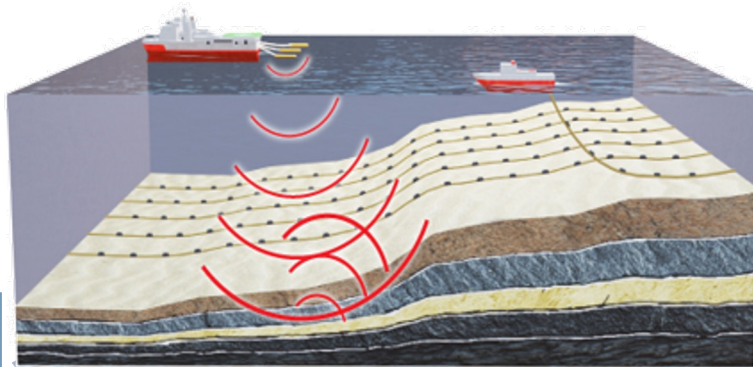
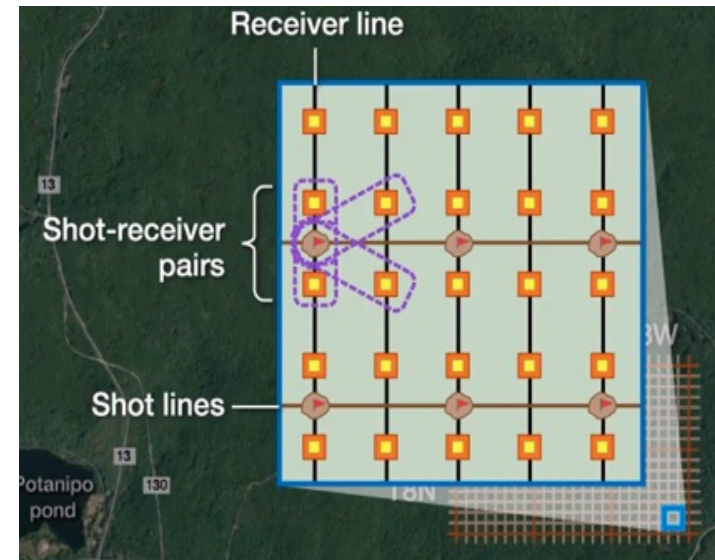
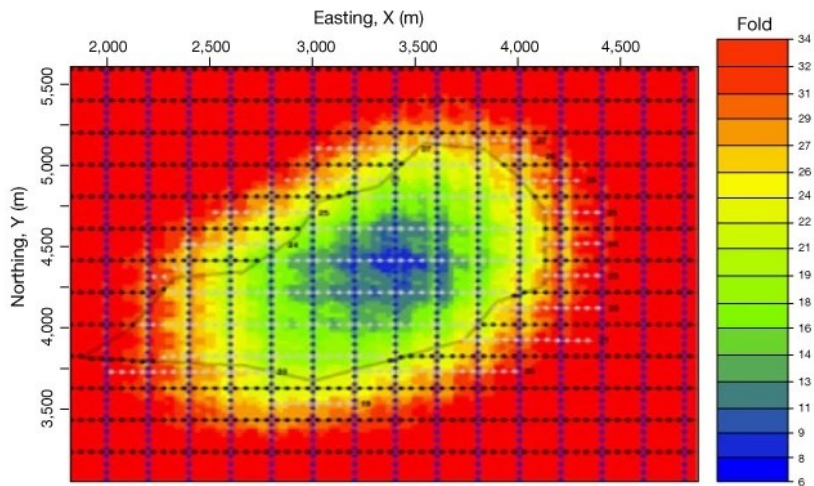
Logging Tools and Well Logs

- Gamma Ray Logging Tools and Well Logs
- Spontaneous Potential Logging Tools and Well Logs
- Density and Photoelectric Logging Tools and Well Logs
- Neutron Logging Tools and Well Logs
- Sonic Logging Tools and Well Logs
- Resistivity Logging Tools and Well Logs



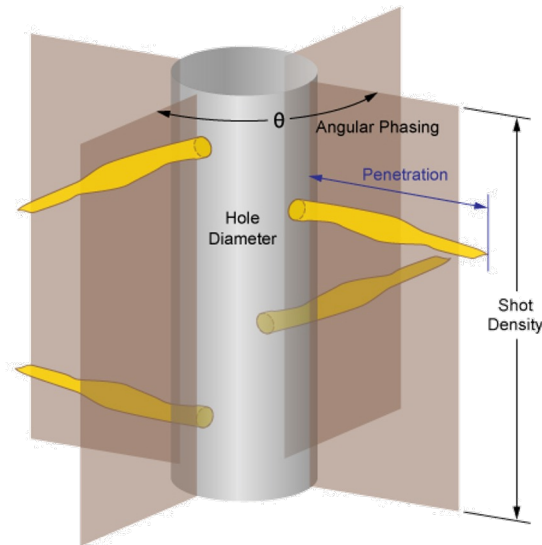
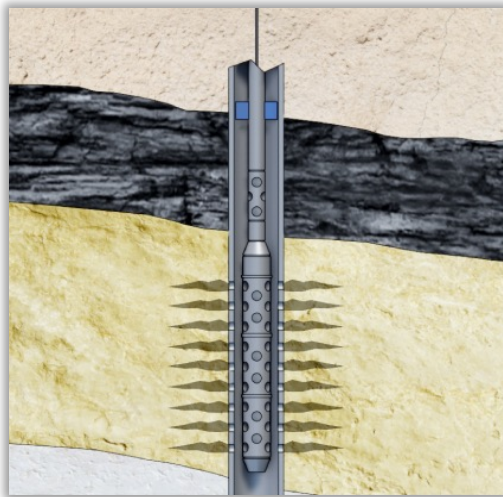
3D and 4D Seismic Modeling, Design, and Acquisition

- Overview of 3D Seismic Techniques
- 3D and 4D Seismic Modeling, Design and Acquisition
- Seismic Acquisition Techniques



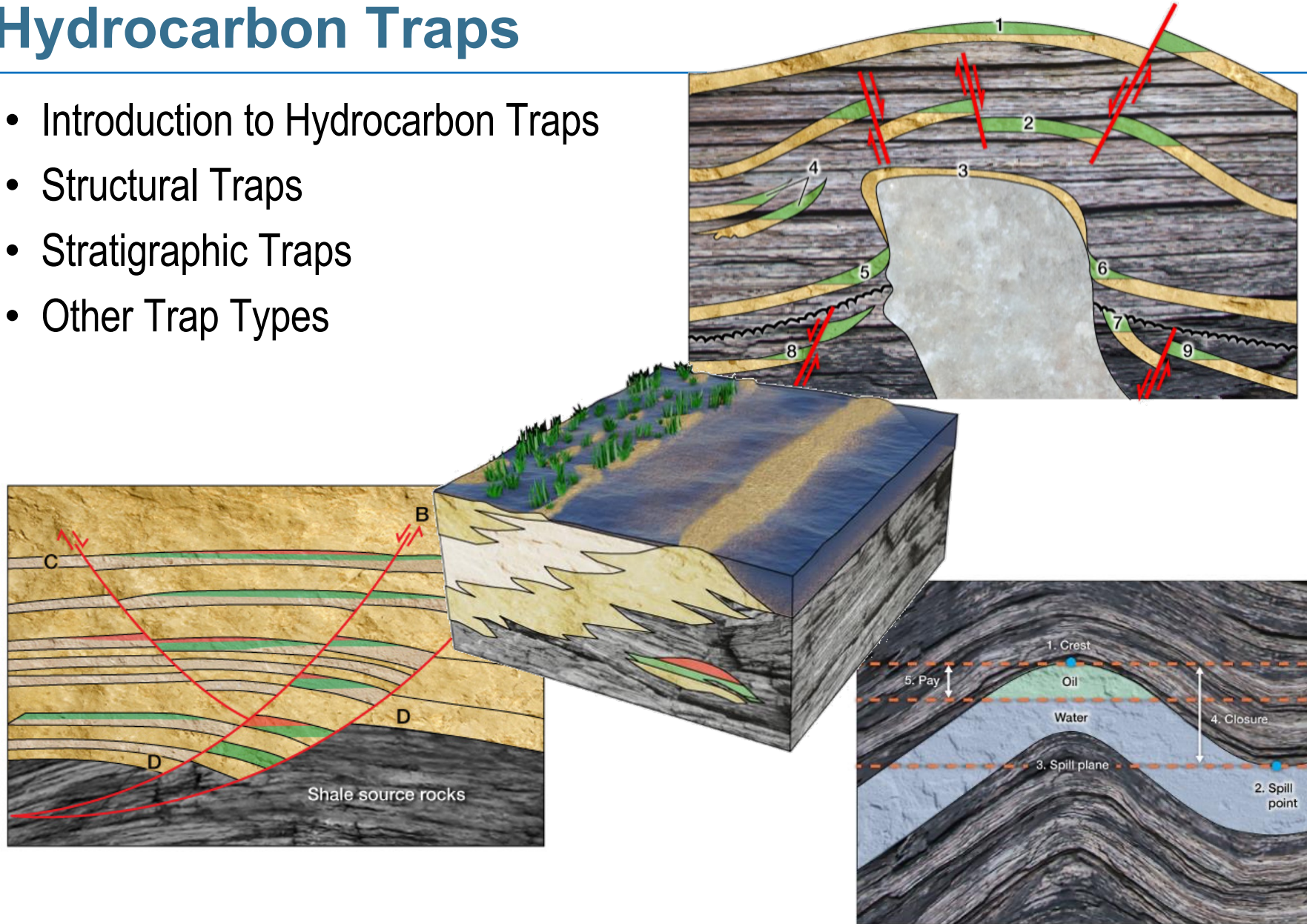
Perforating

- Introduction to Perforating
- Perforating Gun Types and API Testing Procedures
- Perforating and Production Performance
- Electric Wireline Perforating
- Tubing-Conveyed Perforating
- Coiled Tubing and Pump-Down Perforating



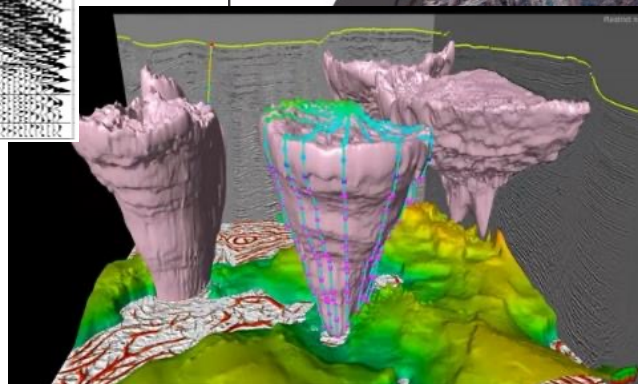
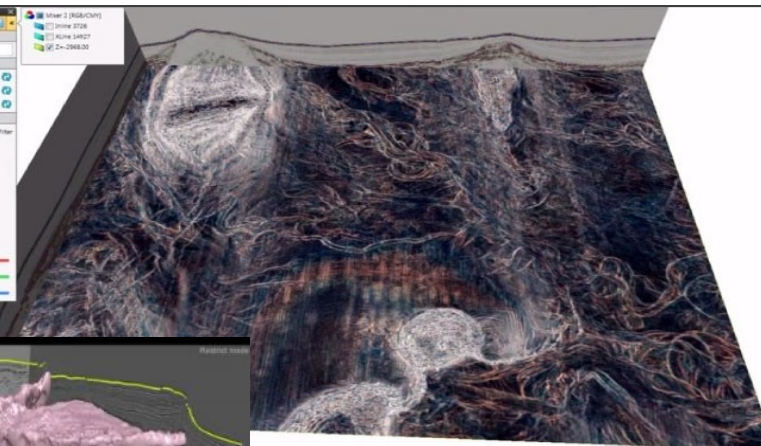
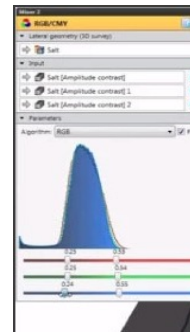
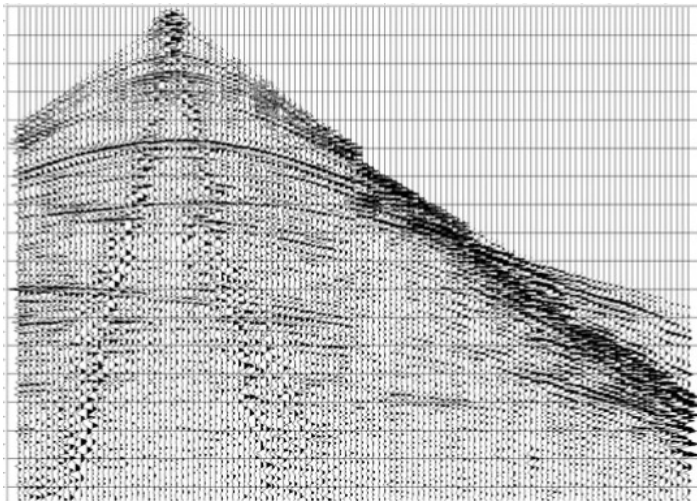
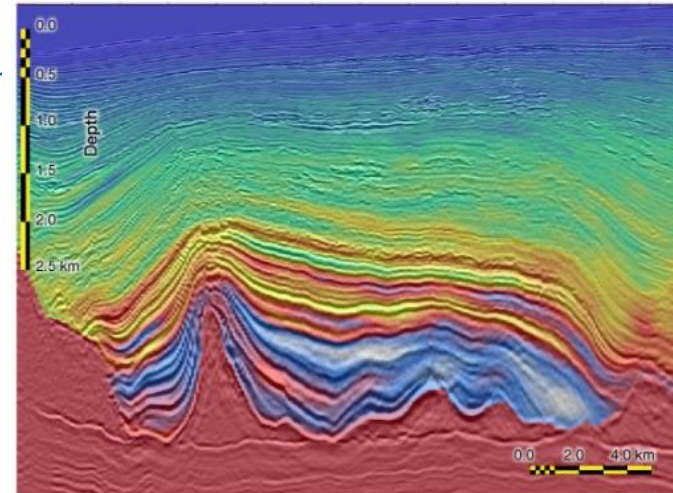
Hydrocarbon Traps

- Introduction to Hydrocarbon Traps
- Structural Traps
- Stratigraphic Traps
- Other Trap Types



Basic Seismic Processing

- Overview of Seismic Processing
- Pre-Processing and Deconvolution
- Stacking and Velocity Analysis
- Migration and Post-Processes



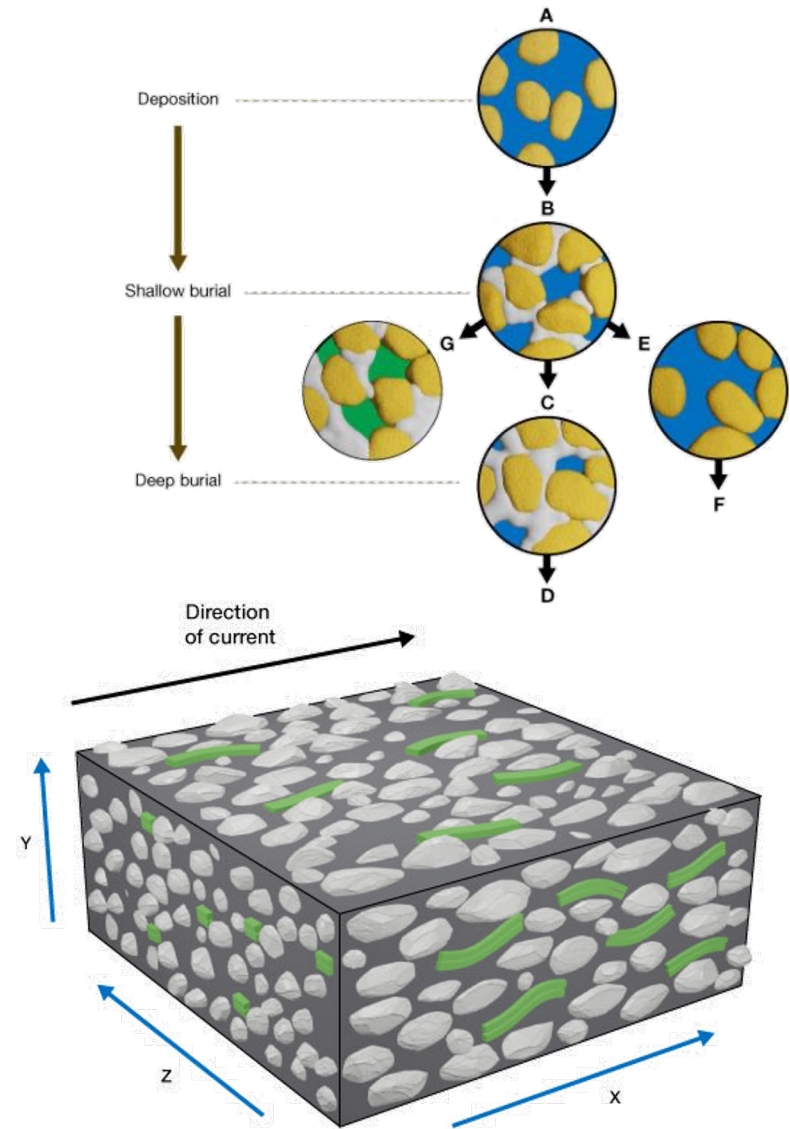
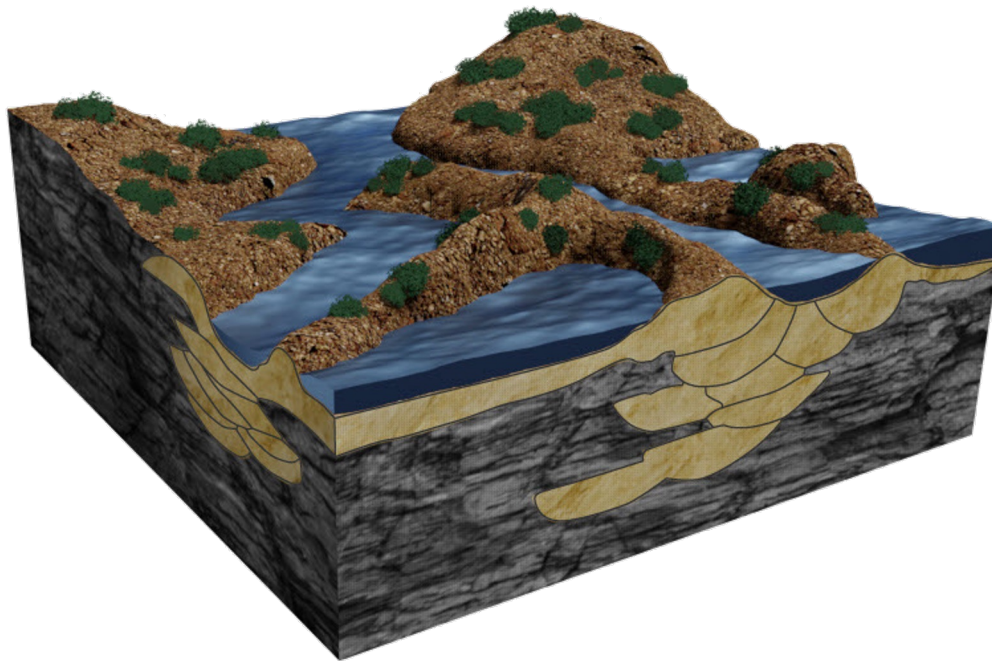
Content Releases

2019

- Reservoirs
- Seismic Stratigraphic Modeling
- Resources and Reserves Estimation
- Well Log Interpretation Essentials
- Hydrocarbon Indicators
- Risk Analysis Applied to Petroleum Investments
- Seismic Interpretation of Shales

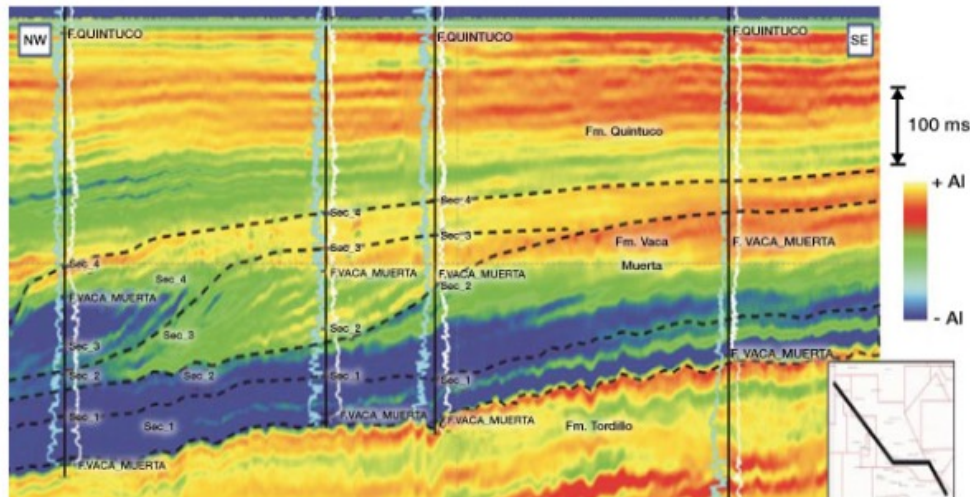
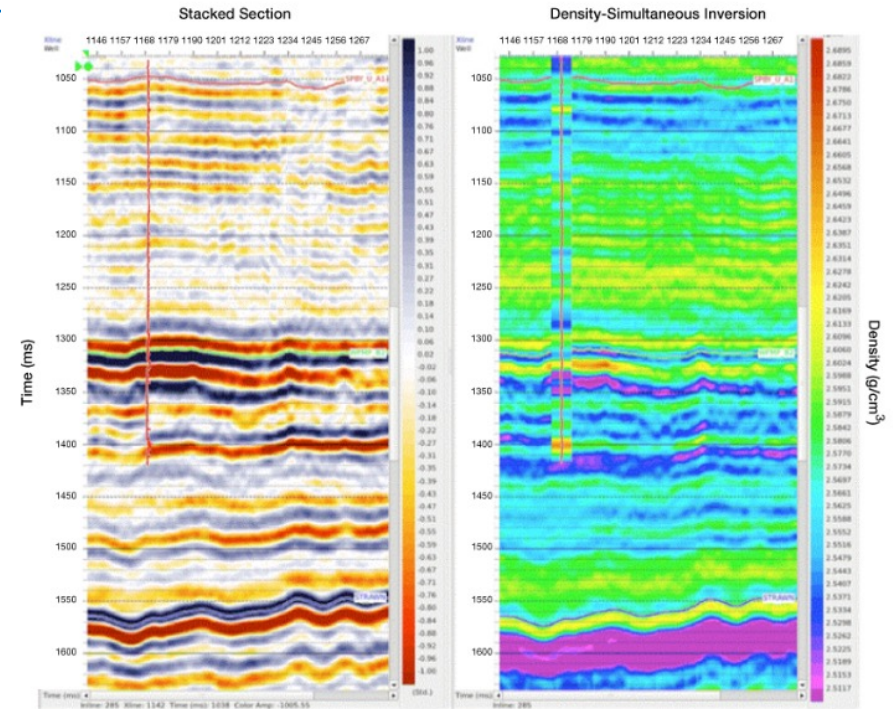
Reservoirs

- Rock Properties
- Diagenesis
- Reservoir Continuity and Hydrocarbon Volume Calculations



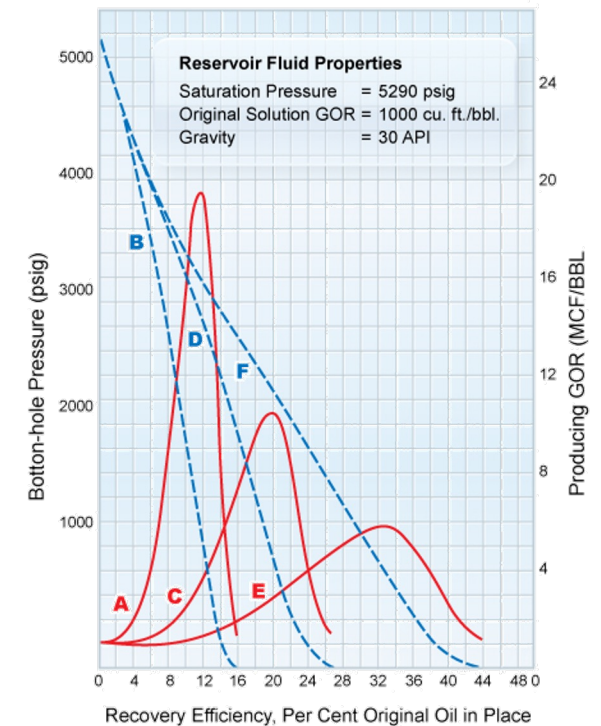
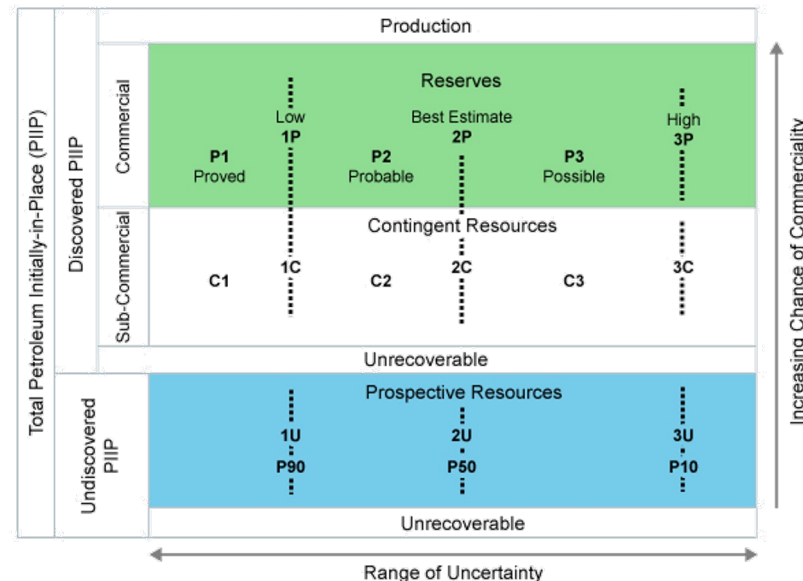
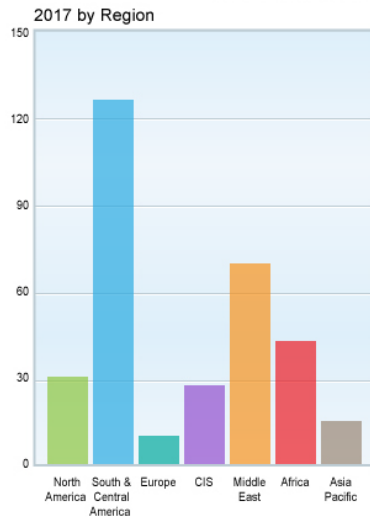
Seismic Stratigraphic Modeling

- Stratigraphic Prospects and Seismology
- Velocity and Seismic Responses
- Forward Modeling
- Inverse Modeling
- Amplitude Versus Offset Analysis



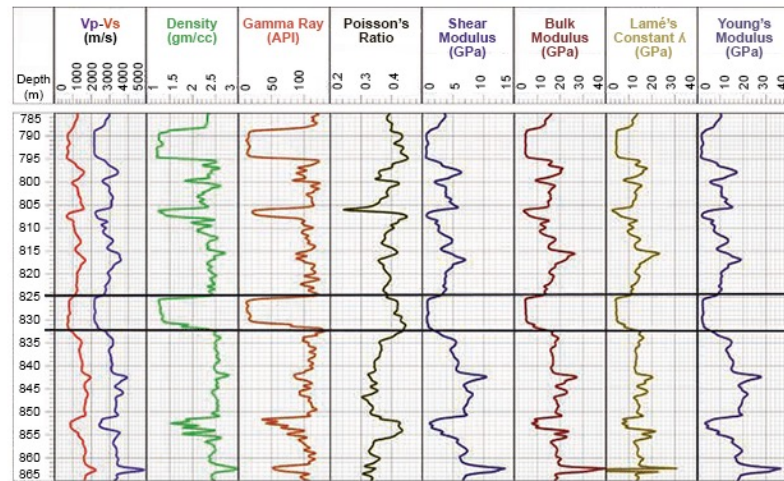
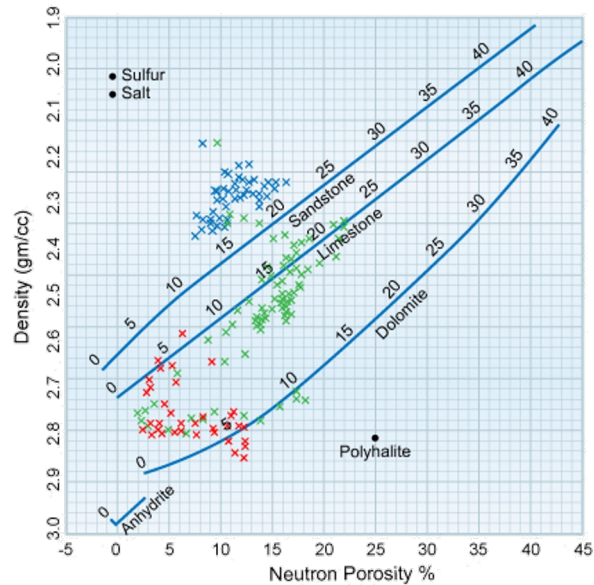
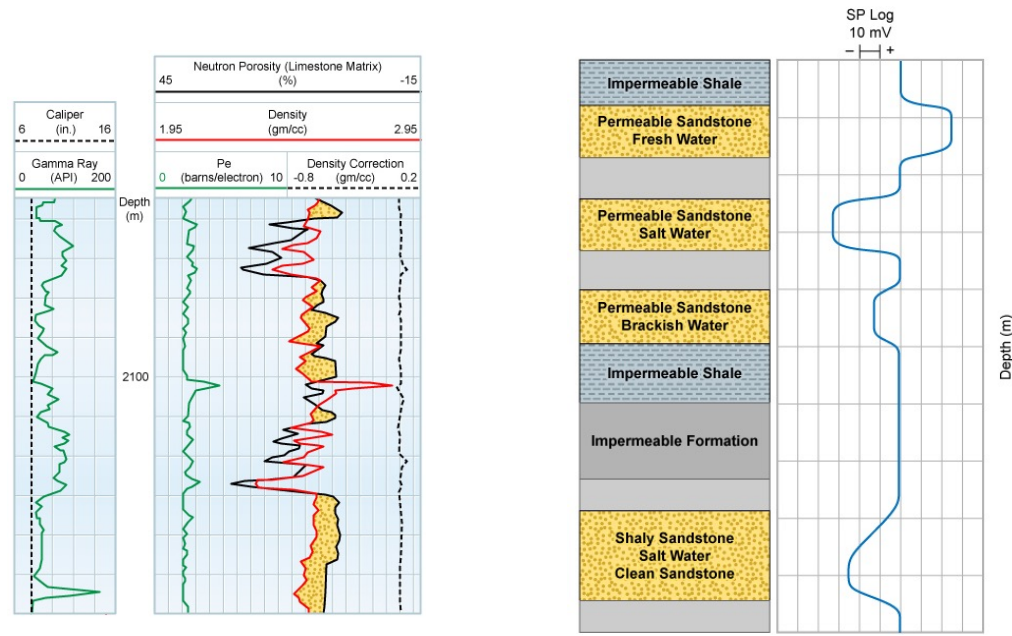
Resources and Reserves Estimation

- Introduction to Resources and Reserves Estimation
- Resources and Reserves Classification Systems and Definitions
- Analog and Volumetric Methods for Resources and Reserves Estimation
- Performance Methods for Estimating Reserves
- Issues in Reserves Estimation
- Resources and Reserves Estimation Case Studies



Well Log Interpretation Essentials

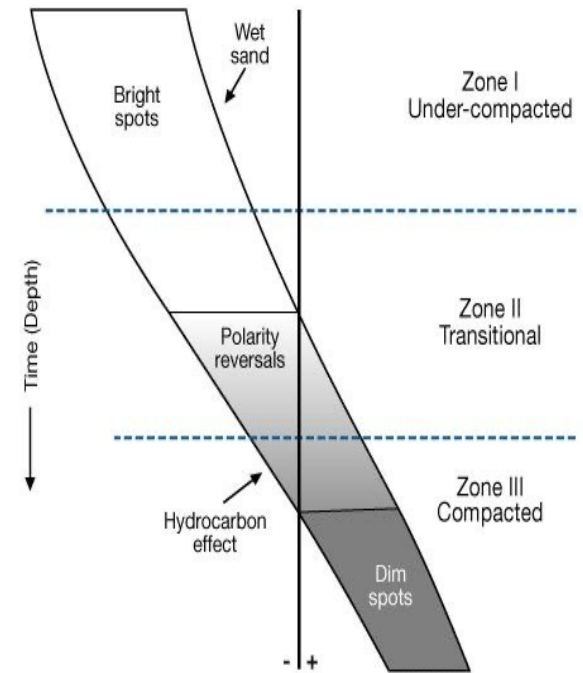
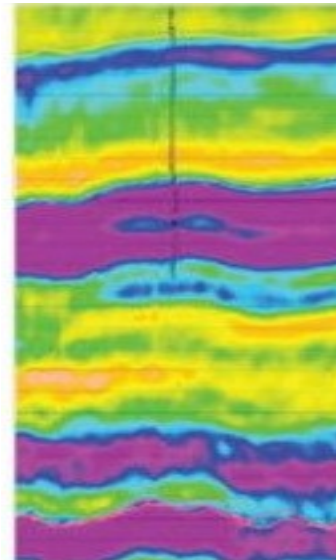
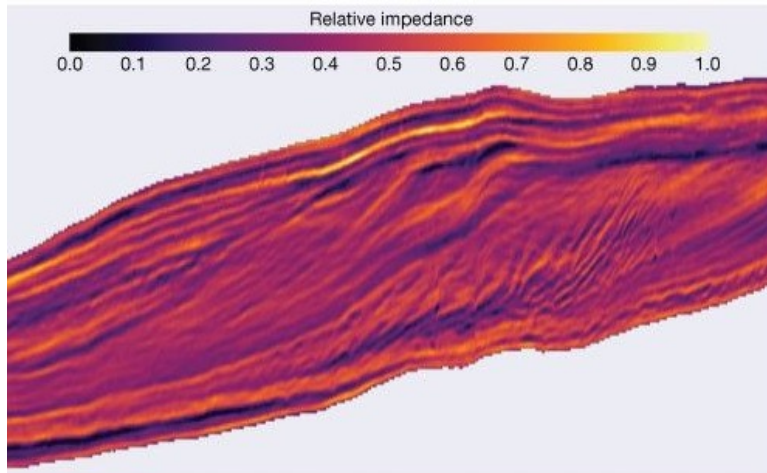
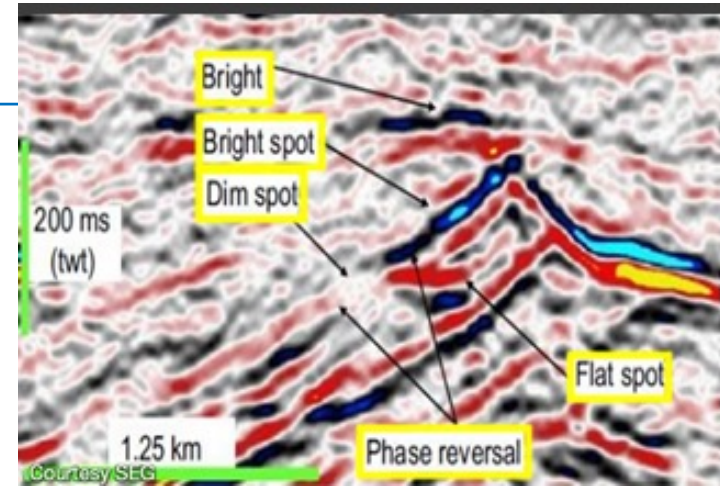
- Quick-Look Interpretation
- Shale Content
- Porosity
- Lithology
- Fluid Saturation
- Field Studies



Rodríguez-Pradilla, et al. (2018)

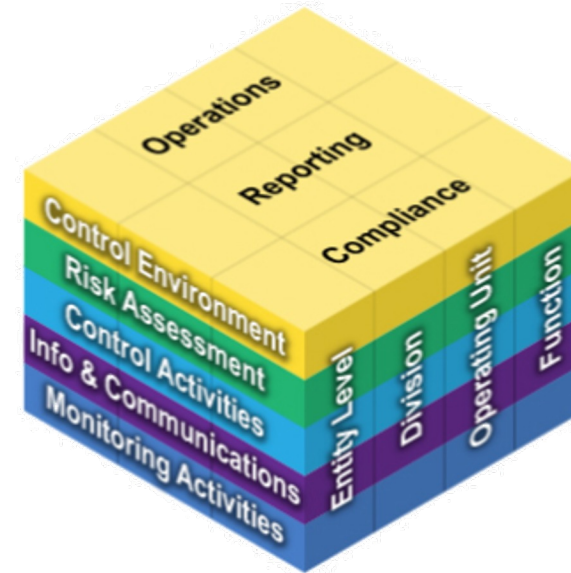
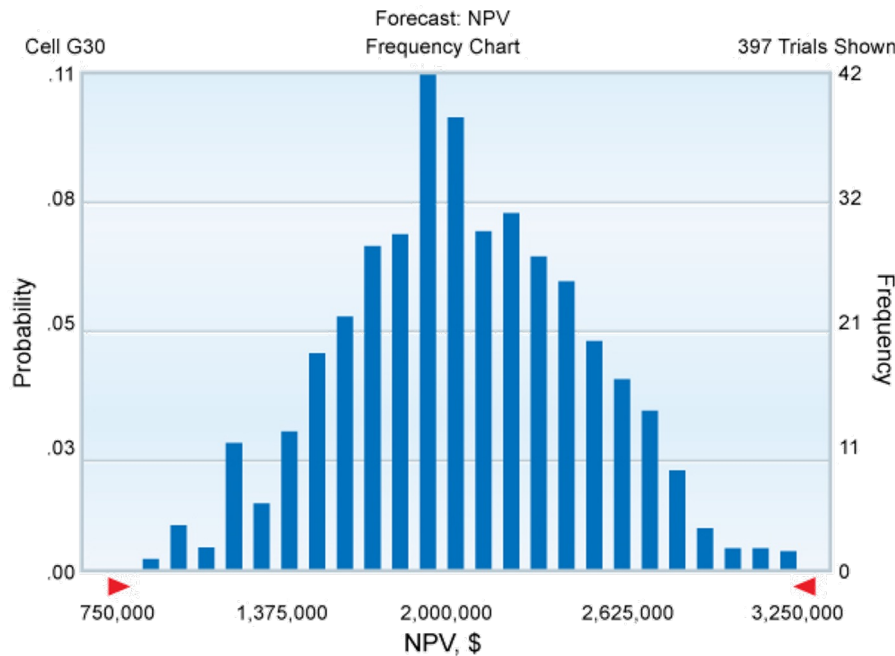
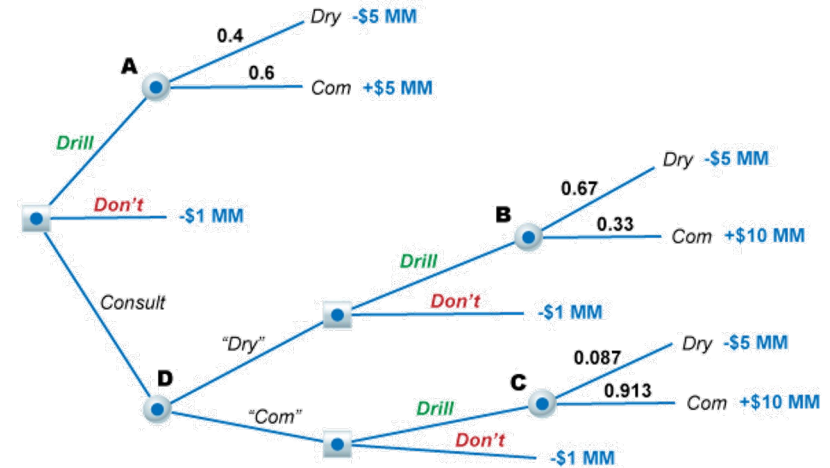
Hydrocarbon Indicators

- Seismic Methods and Hydrocarbon Detection
- Reflections and Seismic Parameters
- Seismic Attributes and Their Preservation
- Amplitude HCl's
- Amplitude Versus Offset (AVO)
- Seismic Modeling
- Shear Waves and Other Hydrocarbon Indicators



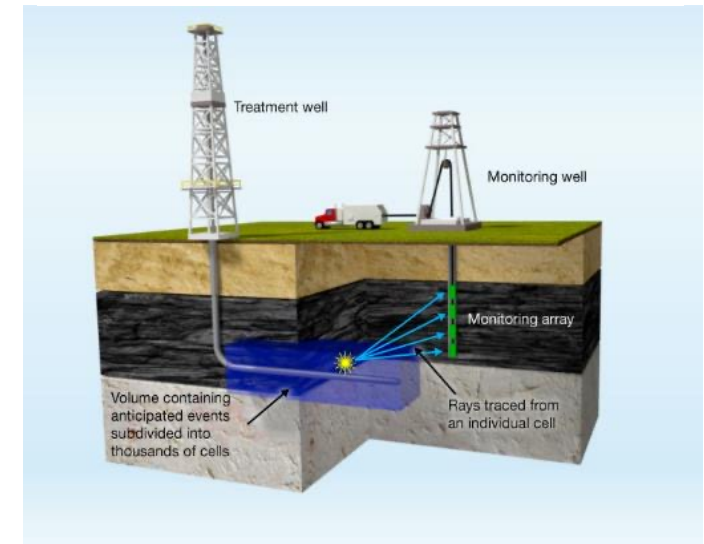
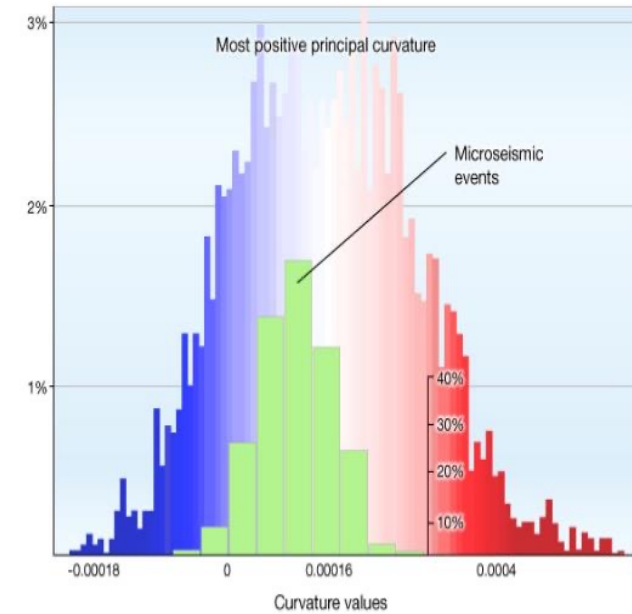
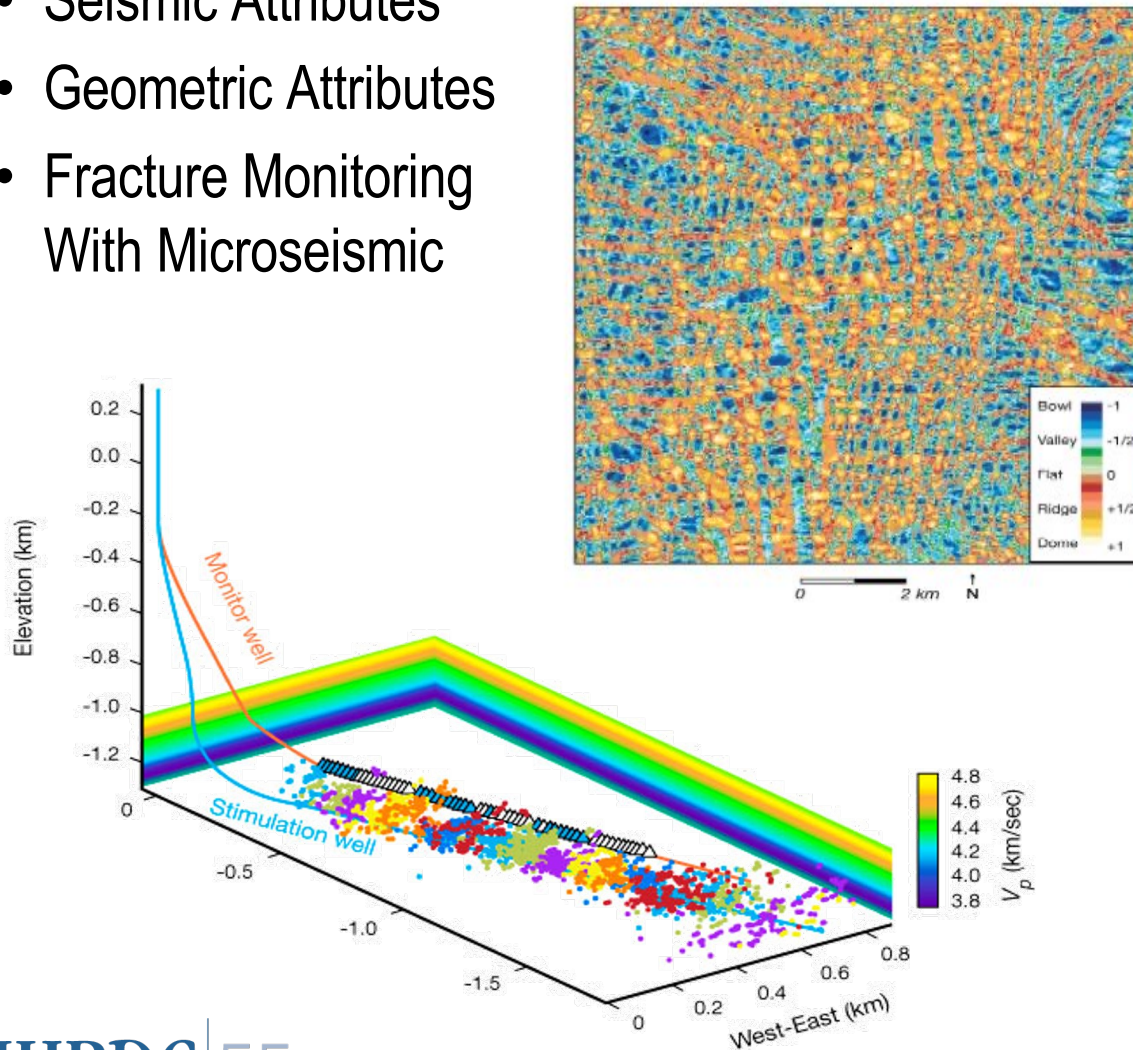
Risk Analysis Applied to Petroleum Projects

- Risk Analysis Fundamentals
- Probability Distributions
- Monte Carlo Simulation Models
- Competitive Bidding and Enterprise Risk Management



Seismic Interpretation of Shales

- Unconventionals
- Seismic Attributes
- Geometric Attributes
- Fracture Monitoring With Microseismic



2015-2018 Content Releases

- **Petroleum Geology**

- Fundamentals of Petroleum Geology
- Structural Geology
- Hydrocarbon Properties
- Petroleum Geomechanics
- Plate Tectonics and Sedimentary Basins
- Subsurface Environment
- Hydrocarbon Generation and Migration

- **Petroleum Geophysics**

- Fundamentals of Exploration Geophysics
- Signal Theory: A Graphical Introduction
- Waveform to Geologic Model
- Gravity and Magnetism
- Seismic Pulse
- Seismic Reflection
- Basic Seismic Interpretation
- Velocity Interpretation and Depth Conversion
- Fault Interpretation
- Seismic Contouring

- **Petroleum Engineering**

- Artificial Lift Methods
- Cementing
- Electric Line Well Intervention (NEW)
- Overview of Rigless Well Intervention (NEW)
- Fluid Flow and the Production System
- Hydraulic Fracturing
- Slickline Well Intervention (NEW)
- Coiled Tubing Well Intervention (NEW)
- Basic Completion Design and Practices
- Completion Equipment

- **Formation Evaluation**

- Dipmeter Surveys
- Coring
- Core Analysis
- Logging Equipment and Procedures
- Overview of Formation Evaluation

- **Multidisciplinary**

- Introduction to Unconventional Resources (NEW)